



Features:

- Tailored for emerging product designs
- Similar size to USB2.0 Micro-B
- Reversible plug orientation & cable direction
- Extended 5A current ranges plus USB Power delivery
- Designed to establish future USB performance needs
- High speed up to 10Gb/s

Overview:

Amphenol's USB C type connectors, designed for emerging product designs are fully compliant to the newest C Type spec. The usability for these low profile connectors is enhanced by offering reversible plug and cable directions. The connectors also supports calable power charging by extending 5A current ranges plus USB power delivery.

Applications:

Smart Phones & Mobile Devices

- MP3 & music players
- Mobile phones
- Tablets, PCs, notebooks
- Portable charging bases
- Memory storage

Automotive

- GPS systems/navigation
- Driver assistance systems
- Infotainment systems

Consumer

- Copiers, printers, scanners
- Digital cameras, video cameras
- Digital & DVD media players
- LCD & TV panels
- Set top boxes

Telecommunications

- Handsets
- ISDNs
- PBXs



To learn more about USB Type C connectors:

web: amphenolcanada.com

email: sales@amphenolcanada.com

Technical Characteristics:

Materials	
Contact	Copper Alloy
Shell	Stainless Steel
Housing	High Temperature Polymer UL94V-0, black
Plating	
Contacts	Selective Plating in Contact Area; Solder Tail Matte Tin Over Nickel; See drawing for more detail
Shell	Nickel Plating
Coplanarity: 0.08 Max.	

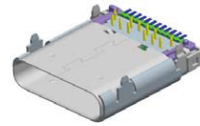
Ordering Information:



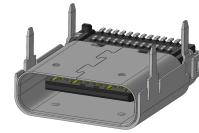
Surface Mount Receptacle
PN: 12401610E4#2A



Overmold Plug
PN: 12401562E4#2A



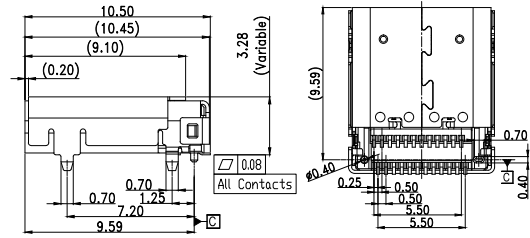
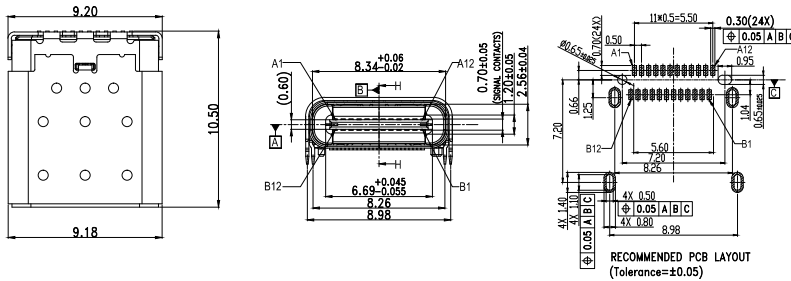
Through Hole Receptacle
PN: 12401548E4#2A



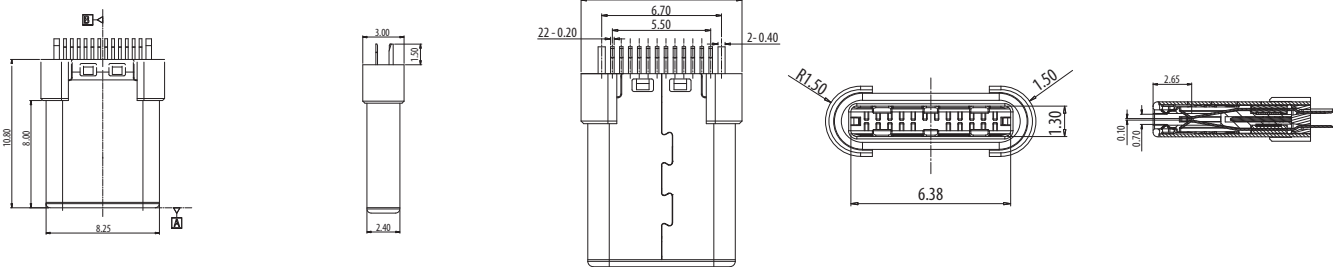
Hybrid Receptacle
PN: 12401598E4#2A

Dimensions:

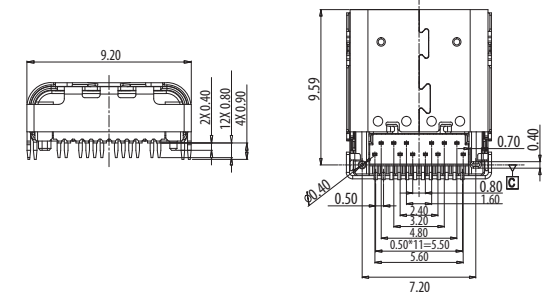
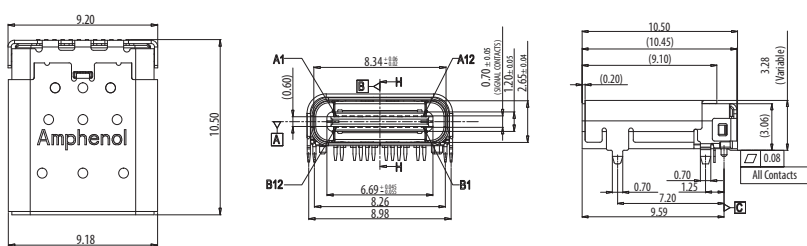
Right Angle, Dual Row, SMT type: 12401610E4#2A



Overmold Plug: 12401562E4#2A



Right Angle, Dual row, Hybrid type : 12401548E4#2A



Right Angle, Hybrid type: 12401598E4#2A

